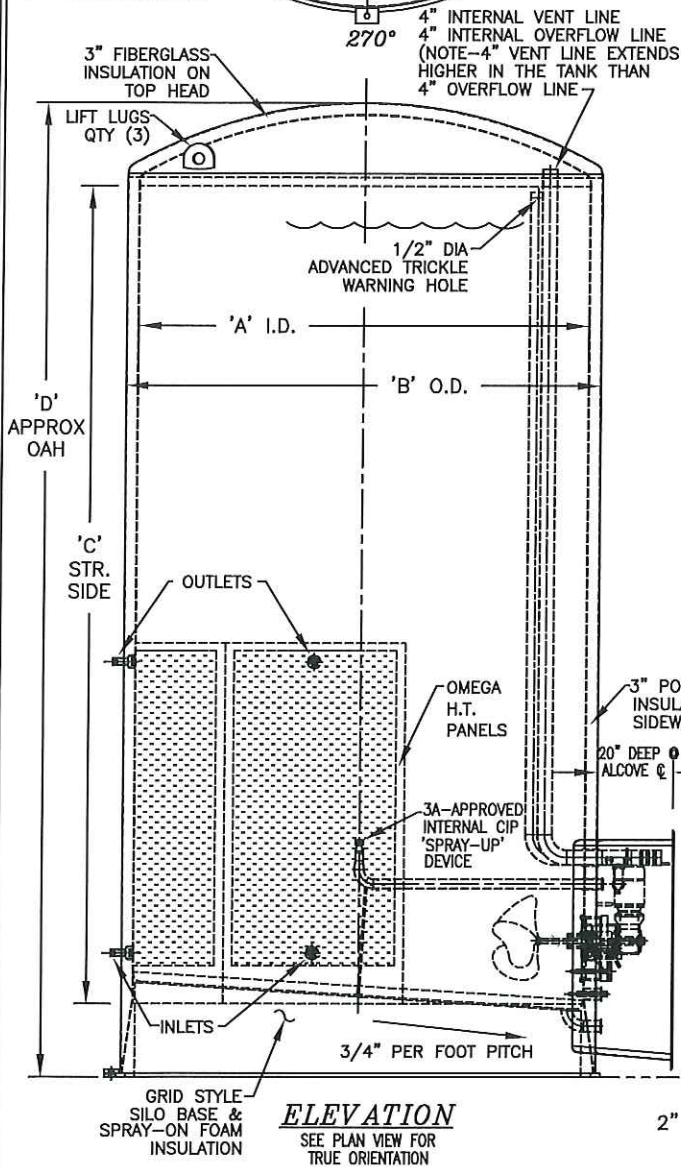


PLAN VIEW



ELEVATION

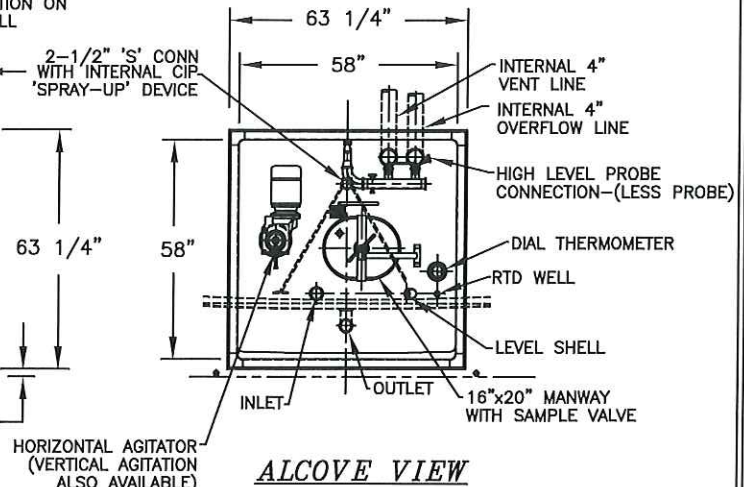
SEE PLAN VIEW FOR TRUE ORIENTATION

CAPACITY	DIM 'A'	DIM 'B'	DIM 'C'	DIM 'D'	SHIP WT
60,000	162"	168-1/2"	57'-0"	61'-0"	39,000 LBS.
60,000	143"	149-1/2"	73'-0"	76'-9"	40,000 LBS.
50,000	162"	168-1/2"	48'-0"	52'-0"	30,000 LBS.
50,000	143"	149-1/2"	62'-0"	65'-9"	37,000 LBS.
50,000	136"	142-1/2"	68'-0"	71'-9"	35,000 LBS.
40,000	162"	168-1/2"	38'-0"	42'-0"	27,500 LBS.
40,000	143"	149-1/2"	49'-0"	52'-9"	34,000 LBS.
40,000	136"	142-1/2"	54'-0"	57'-9"	29,700 LBS.
30,000	162"	168-1/2"	30'-0"	34'-0"	26,000 LBS.
30,000	143"	149-1/2"	37'-0"	40'-9"	31,000 LBS.
30,000	136"	142-1/2"	41'-0"	44'-9"	24,800 LBS.
25,000	143"	149-1/2"	31'-0"	34'-9"	29,500 LBS.
25,000	136"	142-1/2"	35'-0"	38'-9"	22,600 LBS.
20,000	143"	149-1/2"	25'-0"	28'-9"	28,000 LBS.
20,000	136"	142-1/2"	28'-0"	31'-9"	20,000 LBS.
20,000	126"	132-1/2"	32'-0"	35'-7"	18,000 LBS.
20,000	120"	126-1/2"	35'-0"	38'-6"	18,500 LBS.
15,000	136"	142-1/2"	21'-0"	24'-9"	17,400 LBS.
15,000	120"	126-1/2"	27'-0"	30'-6"	15,800 LBS.
12,000	136"	142-1/2"	17'-0"	20'-9"	15,900 LBS.
12,000	120"	126-1/2"	22'-0"	25'-6"	14,100 LBS.
10,000	132"	138-1/2"	15'-0"	18'-7"	13,800 LBS.
10,000	120"	126-1/2"	18'-0"	21'-6"	12,800 LBS.
10,000	114"	120-1/2"	20'-0"	23'-5"	12,900 LBS.
10,000	108"	114-1/2"	22'-0"	25'-4"	13,200 LBS.
9,000	120"	126-1/2"	17'-0"	20'-6"	12,500 LBS.
8,000	120"	126-1/2"	15'-0"	18'-6"	11,900 LBS.
7,000	120"	126-1/2"	13'-0"	16'-6"	11,300 LBS.
6,000	120"	126-1/2"	12'-0"	15'-6"	11,000 LBS.
6,000	102"	108-1/2"	16'-0"	19'-4"	10,200 LBS.
6,000	90"	96-1/2"	20'-0"	23'-3"	9,900 LBS.
5,000	108"	114-1/2"	12'-0"	15'-4"	10,000 LBS.
5,000	96"	102-1/2"	15'-0"	18'-3"	9,200 LBS.
3,000	96"	102-1/2"	12'-0"	15'-3"	8,400 LBS.
3,000	96"	102-1/2"	9'-0"	12'-3"	7,600 LBS.

*OTHER SIZES AVAILABLE - CONSULT FELDMEIER EQUIPMENT SALES FOR INFORMATION AND PRICING

NOTES:

- 1.) ALL DIMENSIONS AND FITTING LOCATIONS TO BE VERIFIED ON THE SUBMITTAL DRAWINGS.
- 2.) STAINLESS STEEL OUTER SHEATHING IS STANDARD.
- 3.) SILO IS DESIGNED TO SIT ON A FLAT CONCRETE PAD, CONSULT THE FACTORY IF OTHER MOUNTING IS REQUIRED.
- 4.) CUSTOMER TO SPECIFY HEATING/COOING MEDIA.
- 5.) HEAT TRANSFER SURFACE IS ASME CERTIFIED.
- 6.) HORIZONTAL CIP-ABLE AGITATOR SHOWN, VERTICAL AGITATION AVAILABLE.
- 7.) ALCOVE CAN BE SHIPPED LOOSE FOR FIELD INSTALLATION BY OTHERS, OR FACTORY WELDED TO THE TANK.
- 8.) SEE ACCESSORY LISTING FOR ALL OTHER AVAILABLE ACCESSORIES.



ALCOVE VIEW



THE FELDMEIER ADVANTAGE...
 SPRAY-UP™ SILOS DO NOT REQUIRE
 LADDERS, CATWALKS, SAFETY RAILINGS
 OR PIPE INSULATION.

**FELDMEIER
 EQUIPMENT**

575 E.MILL STREET
 LITTLE FALLS, NY 13365

REV A EFFECTIVE 12/4/07

SILO STORAGE TANKS
 STANDARD DIMENSIONS

OMEGA HTS / INTERNAL LINES